

HEATHS TO SEA

LANDSCAPE RECOVERY OF THE LOWER OTTER VALLEY

Presentation for Parish Councils

October - November 2024



CLINTON DEVON ESTATES

Project Background

VISION

A diverse landscape, rich in nature and ecologically healthy whilst also supporting food production, net zero, timber and access needs.

AIM

To power nature recovery across agricultural hinterlands linking 3 parts of the Pebblebed Heaths NNR by building connectivity through 4,144ha of the lower Otter catchment through floodplain restoration and riparian and multi-purpose woodland creation.

LANDSCAPE RECOVERY

One of DEFRA's three environmental land management schemes (ELMs), alongside the Sustainable Farming Incentive (SFI) and Countryside Stewardship (CS).

ELMs support farmers and land managers to deliver similar things – clean and plentiful water, thriving plants and wildlife, climate change adaptation and mitigation, and healthy soils – but each will do so in different ways.

The SFI and CS offer shorter agreements based on a menu of standards and options. Farmers can select those best suited to their holding and farming practices.

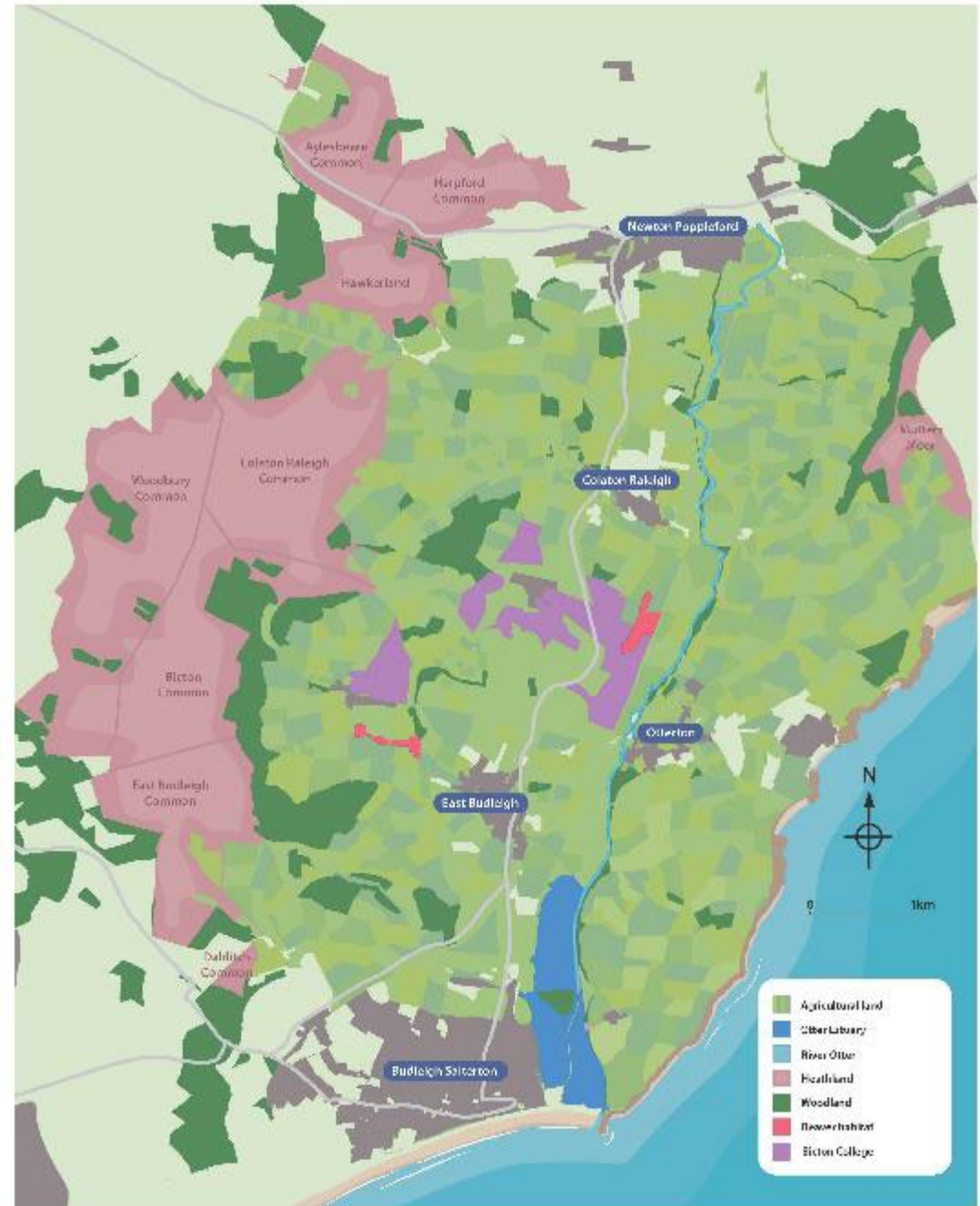
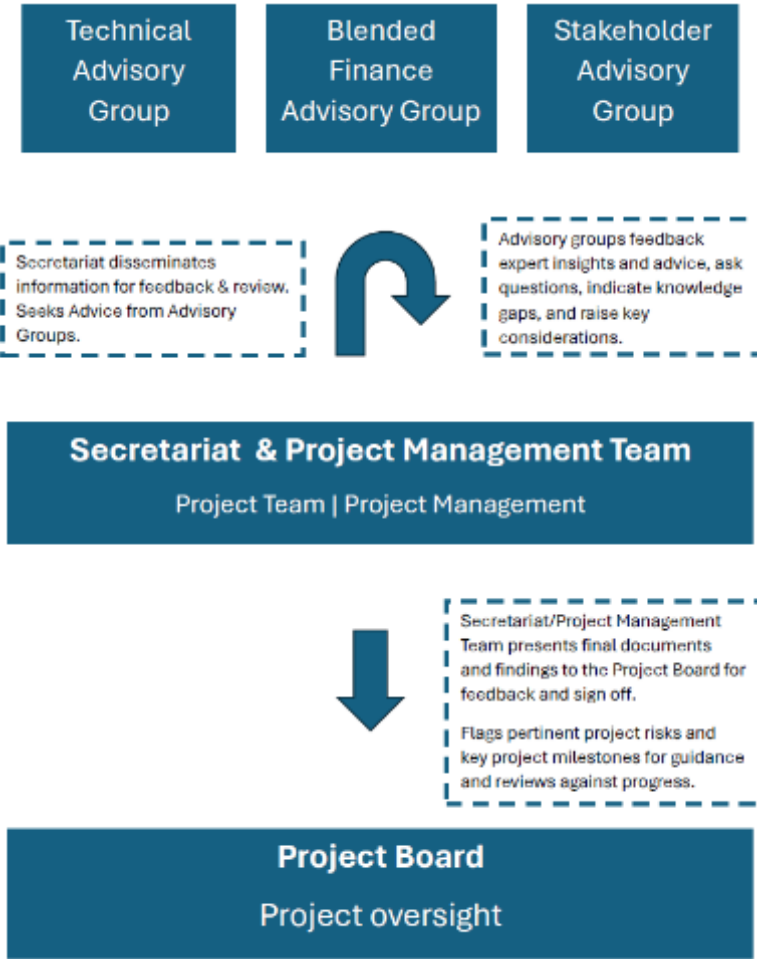
Landscape Recovery offers farmers and land managers the opportunity to co-design a long term, bespoke, agreement to produce environmental and climate goods across landscape scale projects.



HEATHS TO SEA

LANDSCAPE RECOVERY OF THE LOWER OTTER VALLEY

Project area and governance



Current Land Management

Current management

- Managed through a broad range of agricultural practices
- 35% of the land is grade 1 (excellent) or 2 (very good)
- 33 land management holdings
 - “in-house” – dairy Home Farm
 - 31 tenant farming agreements
- Reserves – Pebblebed Heaths and lower Otter Estuary
- 5 beaver territories within the project area



Concerns to mitigate

- River movement impacting public access
- Newton Poppleford, Colaton Raleigh, Otterton & East Budleigh have been prone to flooding in recent years



HEATHS TO SEA

LANDSCAPE RECOVERY OF THE LOWER OTTER VALLEY

Development Phase

Runs from April 2024 to March 2026

Baselining, feasibility and options investigation

1. Project Management & Governance Plan

2. Landscape Management Plan

- Ecological baseline and options
- Hydrological baseline and options
- Heritage review – sites of potential interest
- Soil quality and Carbon storage baseline
- Woodland baseline and options
- Natural Capital Account

3. Monitoring & Evaluation Plan

3. Site Access Plan

- Current site use and access
- New opportunities and link-ups

4. Stakeholder Engagement Plan

- Communications strategy
- Consulting workshops and events

5. Blended Finance Plan

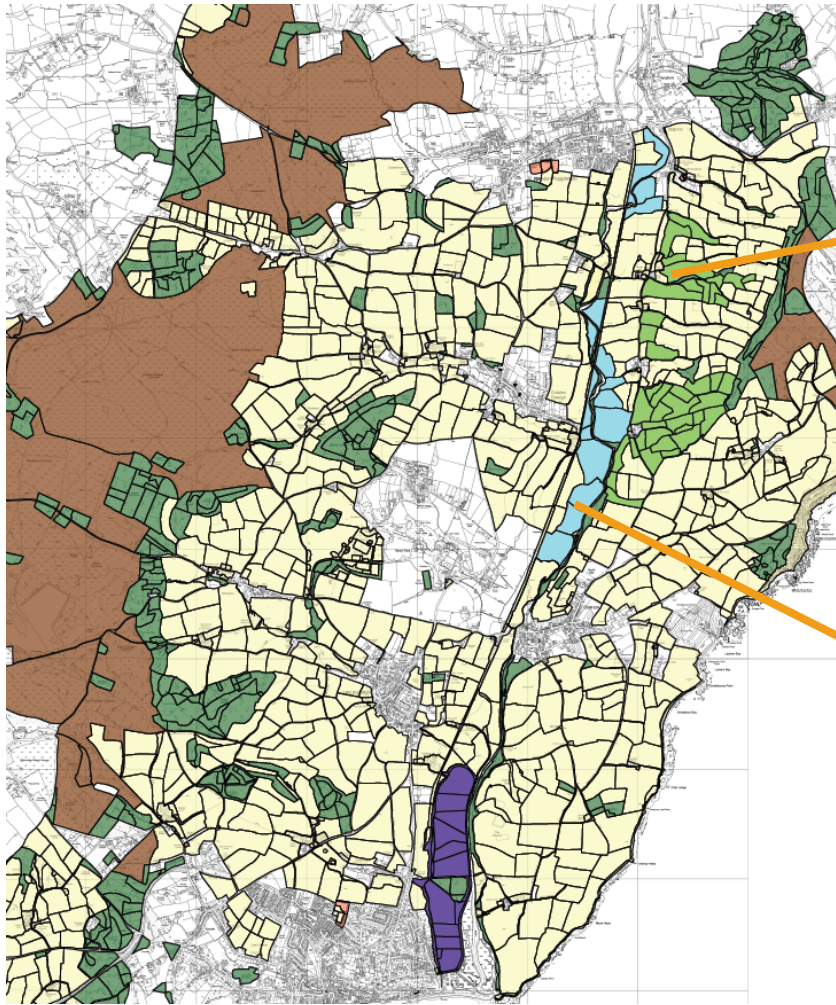
- Investigating the green finance market
- BNG opportunities
- Socio-economic
- Tourism and farm diversification



HEATHS TO SEA

LANDSCAPE RECOVERY OF THE LOWER OTTER VALLEY

Potential Landscape Change



- 96 ha riparian planting and multi-purpose woodland creation
- 170 ha of river and floodplain restoration associated with 9km of the main River Otter and a further 10km of tributaries
- 100 hectares of Otterton Hill (western scarp) provisionally identified for woodland creation.
- Improved agricultural land management for nature benefits



HEATHS TO SEA

LANDSCAPE RECOVERY OF THE LOWER OTTER VALLEY

Engagement with local communities

15th October: Stakeholder Engagement Workshop

Invites have been sent to representatives of a range of communities, livelihoods, land managers and users

October to November: present at local parish council meetings

November to March: Plan for community engagement and deliver engagement and consultation events
(majority of events will be delivered from January 2025)

Updates to the project website, articles in parish council magazines and posts on Clinton Deven Estates social media (Instagram, LinkedIn and Facebook) will be ongoing.



HEATHS TO SEA

LANDSCAPE RECOVERY OF THE LOWER OTTER VALLEY

Project Timeline

April 2024

June 2024

Dec. 2024

April 2025

June 2025

Dec. 2025

April 2026

Recruit PM team

Commission assessment work

Stakeholder engagement

Drafting and refining of plans

Project management, business case and legal work

Phasing is very tight



HEATHS TO SEA

LANDSCAPE RECOVERY OF THE LOWER OTTER VALLEY

<https://www.heathstosea.com/>

↓ Have your say ↓



Thank you



HEATHS TO SEA

LANDSCAPE RECOVERY OF THE LOWER OTTER VALLEY